



FWSA PHILIPPINES DIVE TRIP
October 19 – 24, 2024
October 24 – November 2, 2024

PRE-TRIP – Buceo Anilao Beach & Dive Resort – 5 Nights October 19 – 24

Basic Cost excluding air travel:

4 Day (16 boat dives) Dive Package *	\$ 1,207 pp. Dbl. Occupancy
Non-Dive Package	\$ 707 pp. Dbl. Occupancy
Single Supplement (Superior Room)	\$ 168 additional
Single Supplement (Standard Room) (2 available)	\$ 4 additional

Price Includes:

5 nights at Buceo Anilao Beach & Dive Resort – based on 2 per room in a Superior Room
3 meals daily
WIFI - limited
Airport transfers from Manila Airport to Buceo Anilao Beach & Dive Resort
Transfers from Buceo Anilao Beach & Dive Resort to the Port of Batangas
Resort fees, taxes, Marine Park fees, and gratuities (Dive gratuities not included)

MAIN TRIP – Marco Vincent Resort – 9 Nights October 24 – November 2

Basic Cost excluding air travel:

8 Day (24 boat dives) Dive Package **	\$ 3,379 pp. Dbl. Occupancy
Non-Dive Package	\$ 2,124 pp. Dbl. Occupancy
Single Supplement	\$ 517 additional

Price Includes:

9 nights at Marco Vincent Resort – based on 2 per room in a Deluxe Room
Breakfast, lunch, and dinner daily
Coffee bottled water and tea.
2 Day trips to Verde Island and Anilao
1 Hour massage
Philippine culture & entertainment
WIFI – limited.
Transfer from Port of Batangas to Marco Vincent Dive Resort
Transfer from Marco Vincent Dive Resort to Manila Airport
Resort fees, taxes, Marine Park fees & gratuities (Dive gratuities not included)

GROUP AIR - Both Resorts Only! (min 10 passengers) (limited - based on availability)

Airfare on Philippine Airlines RT San Francisco to Manila, Philippines \$1,250 per person
Red eye departure night of October 17, 2024
Excess Baggage fees are not included and are an additional cost.

ASSISTED AIR - Marco Vincent Resort Only (based on availability)

Airfare on Philippines Airlines RT San Francisco to Manila, Philippines Est \$1,300 per person
Price is subject to change – published airfare and fully payable.
Red eye departure night of Oct 22, 2024
Excess Baggage fees are not included and are an additional cost.

Philippine Airlines has strict size and weight limitations (subject to change) on the carryon luggage which they are enforcing at the airport more than ever now. Passengers are allowed one carryon weighing no more than 15lbs. *Total dimensions of the bag (height + width + depth) must not exceed 45 inches with maximum dimensions of 22 in x 14in x 9 in INCLUDING HANDLES AND WHEELS.* Passengers are also allowed a small personal item such as a laptop case/bag or purse. Most normal carryon bags exceed the size limitations, so it is best to be prepared. If a carryon bag exceeds either the size or weight limitations shall be treated as Oversized and will be charged an Excess Baggage Charge (EBC)

Each person is allowed TWO 50lb checked bags (subject to change). (Total dimensions of each piece should not exceed 62in). * *Total dimensions are measured by adding together the height, width, and depth of the bag.* Check-in bags that exceed the allowed dimension or weight shall be treated as Oversized / Overweight and will be charged an Excess Baggage Charge (EBC) of \$200 one way.

Payment Schedule – Land:

Initial deposit	Immediately	\$ 700 - \$1,500 per person
2 nd payment	April 1, 2024	\$ 700 - \$1,300 per person
3 rd payment	May 15, 2024	\$ 700 - \$1,300 per person
Final payment	July 8, 2024	\$ balance

Payment Schedule - FWSA Group Air:

Initial deposit	Immediately	\$ 400 per person
2 nd payment	April 1, 2024	\$ 300 per person
3 rd payment	May 15, 2024	\$ 300 per person
Final payment	July 8, 2024	\$ 250 balance

Cancellation Penalties:

Prior to June 18, 2024	\$ 0 per person
June 19, 2024 – July 18, 2024	\$ 100 per person
July 19, 2024 – August 17, 2024	\$ 996 - \$2,208 per person
August 18, 2024 – departure date	no refunds.
FWSA Group Air after August 17, 2024	no refunds

Travel on this FWSA trip to the Philippines requires a valid Passport. Your Passport must be valid until May 2, 2025 (six months after your return). It is your responsibility to ensure your required travel documents are in order and with you.

DIVE and TRAVEL INSURANCE:

FWSA highly recommends that you purchase travel insurance. Make sure you understand the COVID coverage since it varies between insurance companies. READ the Fine Print!

Roatan Charters offers trip insurance on their website at: [Trip Insurance – Roatan Charter](#) . Additional travel insurance vendors can be found on FWSA website at: [Far West Travel Insurance - Far West Ski Association \(fwsa.org\)](#). Divers Alert Network (DAN) also offers travel insurance: [Travel Insurance - Divers Alert Network \(dan.org\)](#) .

In addition, all scuba divers will be **required** to have dive accident insurance through Divers Alert Network (DAN), the premier dive insurance. You can get their insurance info at <http://www.diversalertnetwork.org/>

ABOUT THE PHILIPPINES

Visas and Passports: US Passport holders will obtain a 30-day tourist visa on arrival at no extra costs. They may ask to see your confirmed return/onward flight ticket. Please make sure that your passport is valid for a least six months from the date of departure from the Philippines. Visa and passport regulations differ by country of origin. You must check the entry requirements and procedures if you have a non-US passport.

Currency & Payments: The Philippine Peso (PHP) is the official currency in the Philippines. Most businesses, shops and restaurants will accept credit and debit cards. Please note that in some cases, away from the major cities, you may be charged 3.5 – 6.0%. There are many ATMs in most cities and airports. You should ensure you have small denominations of Philippine Pesos for departure tax prior to departing Manila. There are also money changers at the airports. Incidental charges such as gift shop, tours and restaurant/bar can be charged to your room if a credit card has been provided. The resorts accepts Visa and MasterCard. Traveler's cheques are not accepted.

Airport Taxes & Fees: Passengers traveling within the Philippines are required to pay airport terminal fees. Please ensure you have a sufficient number of Philippine Pesos (PHP) to pay these fees on departure. It must be paid in **cash only**. There are ATMs and money exchanges in the airport. Domestic Departures are 200 PHP (approximately \$4-\$5/person USD depending on the daily exchange rate), and International Departures are 200 PHP (approximately \$15 person USD depending on the daily exchange rate). Some airlines include the departure fees in the fare.

Climate and Weather: The Philippines is a tropical country, and the weather is fairly even all year round. The year is roughly divided into two seasons; “rainy” and “dry.” The rainy season generally begins in early June and can extend through November. The months of greatest rainfall are generally July and August. The dry season runs from November to May, but there is always the chance of light rainfall during this period. The warmest months are usually March through May, and the highest humidity is June, July, and August. Year round coastal and inland temperatures range from 81° F - 93° F with an average of 87° F. Evenings are marginally cooler.

Water Temperature and Exposure Suits: Water temperatures are broadly similar throughout the entire Philippines region with averages of 78° F - 82° F. Most guests will find a 3mm wetsuit and possibly just a rash guard suitable for the water temperature. You may even want to bring an extra vest or hood. I wore a 3mm full wetsuit for extra protection.

Electricity in Philippines is 220 volts AC, 50 cycles, using standard 2 prong Euro style plugs. Bring convertors for your electronic gear. Some locations may be 220 volts, 60 cycle, using standard US style plugs.

Philippines Standard Time: Time is UTC +8 hours or +15 hours from the West Coast USA.

Medications: Bring your prescription medications along with your own immunity meds such as Vit C, EmergenC, Airborne, Imodium, etc. Basic medications are available on the island, but it is best to bring what you need with you.

Insect repellent is recommended and is available for sale in the gift shop. We suggest bringing antihistamines to relieve itching you may experience from insect bites as it is much more effective than any topical cream.

Pack lightweight, comfortable clothing. Casual clothing is acceptable throughout the resort. Hats and sunscreen are recommended.

Batteries, especially watch and camera batteries, are expensive and difficult to find on the island. Remember your charger or bring spare batteries with you.

Puerto Galera

Puerto Galera was founded in 1574 as the original capital of Mindoro. The town was popularly known as “Puerto Galera” (Port of the Galleons). Spanish galleons coming from Mexico and Spain used the natural port to take refuge during stormy weather. The bay remains a refuge for ferries and other vessels during storms to this day.

Mindoro is the seventh-largest island in the Philippines. In past times it was called Ma-I or Mait by ancient Chinese traders and., as Mina de Oro (meaning gold mine) by the Spaniards. This is where the modern-day name came from. In 1942, the Japanese Air Force and Navy occupied the town. Mindoro’s Mount Halcon rises to 8,482 feet and is the 18th highest peak in the Philippines.

The water is certainly the main attraction of the island. Crystal clear and shimmering especially during the hot summer months, the sea framing Puerto Galera is ideal for swimming, sailing, surfing, snorkeling, and scuba diving. In fact, one does not have to go by boat to get to a dive site. Within a kilometer from the coast, schools of Moorish idols, trumpet fish, frog fish, lionfish, and leaf fish weave in and out of thriving corals and sea anemones while species of starfish – from the speckled red-and-white to the neon-blue Pacific – rest on the sandy floor.

Gradually sloping beaches – with the terrain ranging from powder white sand to grainy dark sand to smooth stones to rough coral rubble – comprise a large chunk of the island’s 25 thousand hectares. And while the Department of Tourism’s last count pegs the number of resorts at 115, pockets of isolated and virtually resort less coves and beaches are tucked between massive rock formations.

Puerto Galera is a tropical paradise that is both rustic and thriving. By day it echoes with the soft breeze and the pounding waves. At night, it comes to life with heady laughter and the clink of wine and glasses, only to segue once again to the barest whisper of the elements.

Another bonus for PG is that the topography of the coastline has sheltered areas where you can dive in most conditions. Very few diving days are lost due to bad weather each year. The Philippines has around twenty named storm systems each year. Not many affects Puerto Galera as they are more prone to affect the east coast of the Philippines.

The Puerto Galera diving area stretches from White Beach right around to Coral Cove. It is part of the Verde Island Passage and named by some scientists as the center of the world's marine biodiversity. There are over an estimated 3000 marine species including a hundred new species discovered within the last few years. In this area we have nearly fifty dive sites. The sites are an interesting mix of sloping reefs, Coral gardens deep pinnacles, shipwrecks, channel dives, muck diving, drift dives and sea grass beds. The range of depths means that the scuba diving is great for open water students right through to technical divers.

Due to the large tide difference especially around the full and new moons the drift diving can be an exhilarating experience. Canyon's is the best place to enjoy the ride. You can see schools of jacks, sweetlips, fusiliers, snappers, and batfish all feeding in the nutrient rich current. Occasional larger visitors like eagle rays, Spanish mackerel and great barracuda often cruise by. The second and third canyons are covered in amazing soft corals. These delicate corals offer a kaleidoscope of wonderful colors that will blow you away.

There are notable shipwrecks around Puerto Galera. The Alma Jane is the most popular; she was sunk in 2003 and lies in thirty meters of water. This wreck has a large school of Photogenic bat fish. You can penetrate this wreck easily as there is plenty of natural light to guide you through the cargo holds. The holds are full of Cardinal fish, you can see the male carrying its eggs in its mouth. Look out for the small air pockets in the ceiling of the holds as you can see Banded Sea snakes. There are some really nice soft corals growth on the outside of the vessel where you can see many shrimp and crab species.

There are three wrecks in Sabang Bay which are full of marine life like leaf scorpion fish, stone fish, and harlequin shrimps. Around the east side there are the remnants of a Japanese patrol boat from World War II. In Manila Channel you can find a wreck that is lying on its side and has some nice sponges and a resident frog fish.

There are some really spectacular muck dive sites in Puerto Galera bay. The most famous area is Giant Clams. It is not uncommon to see multiple Thorny seahorses, high on the most wanted list for divers are mimic octopus, flamboyant cuttlefish, blue ring octopus, hairy frogfish, ornate ghost pipe and mototi octopus. The other sites in the area are Shipyard and Montani. You can find some great bottom dwellers like the wonderpus, velvet ghost pipefish and pygmy cuttlefish. Another muck diving area is at White Beach, you can find bobtail squid, stargazer, and coconut octopus on this underrated dive site.

For fans of sharks there are a few dive sites where you have a chance to see them. The area around Kilima has been known for sightings of thresher sharks. Hibo reef is just a few minutes away from White Beach, this can be a tricky dive with strong currents, but you can see resident white tips sharks. For fans of whale sharks, you have a very small chance to see them around Puerto Galera. There are typically a few sightings each year.

If you are a fan of beautiful coral gardens then you will be impressed with the scuba diving in Puerto Galera. There are plenty of gently sloping reef dives which are full of color and life. We have barrel sponges that are six feet high that have taken hundreds of years to grow. You can see eight species of anemone fish. Sabang Bay has a sea grass area with resident green turtles. Fans of nudibranch will be happy to learn that we have over six hundred species. Another of the most famous but hard to spot favorites is the Pygmy seahorse, these tiny guys live on sea fans and can be found on a number of dive sites around PG.

You can have all this fun in Puerto Galera without even visiting the main diving attraction, which is Verde Island. It is hard to put into words just how good it is. There is a wall of fish that makes it hard to see the reef. I would say it has the most fish per square inch than any other dive site in the whole of the Philippines.



Verde Island – photo by Randy Lew

Anilao

Anilao is a quiet barangay on the northern coast of Mabini, a peninsula-municipality that separates Balayan Bay from Batangas Bay. Yep, it is just a barangay. But Anilao's popularity prompted resorts in neighboring villages to market themselves as also part of Anilao. These days, as far as tourism is concerned, Anilao is almost synonymous with the whole Mabini municipality.

Thanks to its proximity to Manila (only 3 hours away), it has become an ideal destination for divers, especially for beginners who may be a bit hesitant to travel to the far corners of the country for a first dip. The hidden wonders it keeps in its depths are no longer secret, but they continue to amaze curious souls.

Anilao is best known as a diving destination. While Tubbataha Reef is widely considered the Philippines' Diving Mecca, many regard Anilao as an "Eden," the birthplace of scuba diving in the country. But Anilao is more than the treasure-trove it keeps beneath the waves. Its shores are mostly rocky, but in between some of the promontories are small pockets of white and beige sand for the picky beach bum. It is also the gateway to the islands of Tingloy, which have been gaining a lot of attention over the past few years.

Anilao's main draw is its 20+ dive sites. It faces Balayan Bay, which is part of the Verde Island Passage, the center of center of the world's marine biodiversity according to a 2007 Smithsonian Institute study. Anilao is world famous for its exceedingly rare critters but has even much more to offer for enthusiastic divers. A sunken floating casino, very colorful and healthy reefs, many different kinds of corals in a stunning underwater landscape.

Marine Life includes more than 600 different kinds of nudibranchs, pigmy seahorses, anthias, gobies, frogfishes, rare shrimps, and crabs. 5 types of octopuses including blue ring. Flamboyant cuttlefish, jacks, turtles, triggerfishes, cardinals, fusiliers, damsels, giant clams, clown fishes, groupers, mandarin fishes, moray eels including the blue ribbon. Fish include barracudas, idols, parrotfish, batfish, snakes, scorpionfish, stonefish, lionfish, rhinopias, ghost pipefish, leaf, squids, cuttlefish, pufferfish, crinoids, sweetlips and much more.

For those who like bigger animals you will find that Anilao has no shortage of sharks, rays, and other good-sized schooling fish like trivially barracuda. It is also possible to spot the occasional whale shark or other bigger animals while diving. These can be found at the more advanced sites with good currents and some deeper reefs. In turn, those who prefer nice easy diving and colorful soft and hard corals will be fully satisfied in Anilao.

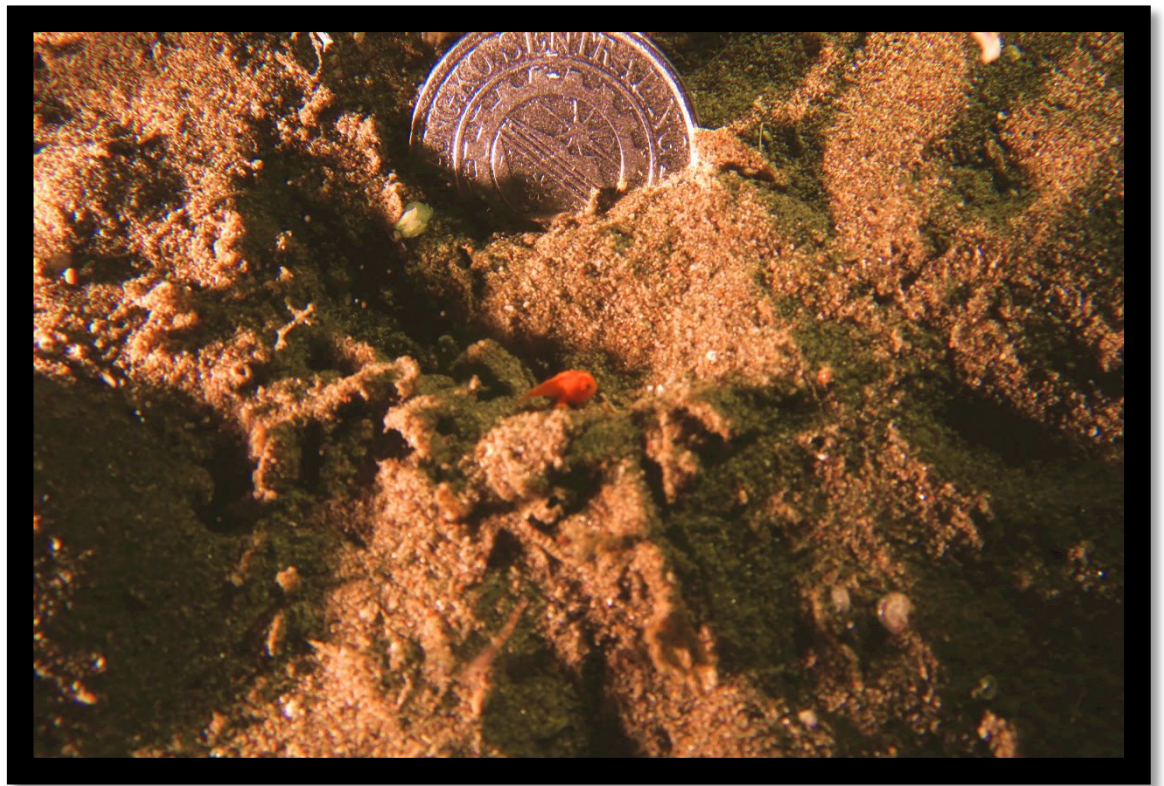
Located right in the middle of the coral triangle, Anilao boasts of some of the widest diversity of coral life that can be found on a dive. Good-sized hard corals such as brain, table and staghorn corals are on almost every dive, mixed with an array of soft corals, large sponges, and gorgonian fans.

Secret Bay, also known as Manit Muck, is probably the best muck dive site in Anilao. Here, you can find mimic octopus, wonderpus, pipefish, frogfish, and the list goes on. Do not forget to dive Manit at night to see this wonderful site come to life.

The Pier, along with Secret Bay, is among the highly requested dive sites during their annual macro photography workshops in Anilao. You can find the much-sought-after bobbit worms and stargazers! **Twin Rocks** is great for macro and wide-angle alike, with pristine soft corals, schooling jacks, and plenty of small fish. **Beatrice** is a great wide-angle site with colorful corals teeming with anthias and other reef fish.



Whale Shark at Oslob – photo by Randy Lew



Juvenile Frogfish – photo by Randy Lew

Mt. Gulugod Baboy literally means “pig’s spine” because of its appearance. It is a range of three hills (Pinagbanderahan, Gitna, and Gulugod Baboy at 1,722 feet above sea level) that runs across the Calumpang peninsula. A great 2 – 4-hour hike. From its summit, you can have a good view of Balayan Bay, Maricaban Islands, and, on a clear day, Verde Island and Mindoro. The trek starts at Philpan Dive Resort.

Sombrero Island is easily accessible from Anilao. You can even see it from some resorts. It is a hat-shaped rocky island surrounded by nice, glittering white sand. You can visit it as part of an island-hopping tour. Just arrange a boat tour at your resort or at Anilao port and tell the boatman to make a stop at Sombrero Island. You can also visit Sepoc Beach on the same tour.

Buceo Anilao Beach & Dive Resort, Philippines (Pre-trip 5 nights)

The ideal place to experience the excellent service and the famous hospitality of the Filipino people. Local and European management, modern facilities, yet maintaining the country’s tropical and relaxed style. Located on a 5,000 sqm coastal property surrounded by a reef full of abundant marine life, and designed to satisfy the taste of all divers, especially underwater photographers with highest expectations.

You can enjoy the Anilao sun on their sun loungers and enjoy the unique feeling of merging yourself with the horizon through the sea. Experience a rewarding and relaxing feeling by taking a dip in their infinity pool and fall in love with the Anilao sunsets. For divers to practice all the necessary techniques there is a special 10-foot-deep pool.



The lodging available includes:

Sea View Superior bedrooms (8 Available) are 269 Sq ft, 1 double bed, 1 twin bed, private bathroom, and private terraces/balconies that provide stunning views of the ocean. Amenities include air conditioning, ceiling fan, safe, Minibar, and free WIFI.



Sea View Deluxe bedrooms (2 Available) are 484 Sq ft, 2 double beds, 1 twin bed, private bathroom and private terraces/balconies that provide stunning views of the ocean. Amenities include air conditioning, ceiling fan, safe, Minibar, and free WIFI.

Standard Room for singles (**2 Available**) is 161 sq ft with a double bed. Amenities include air conditioning, safe, and free WIFI.



The **Sunset Bar** is a meeting point to enjoy your favorite drink while socializing with your friends, or simply enjoying the spectacular sea views from the terrace. A pleasant atmosphere, the best cocktails, spirits, and drinks, prepared in an exquisite and original way by their bartender, all crowned by music and the sound of the sea in this astonishing setting. Free WIFI access allows you to be always connected and share the best moments of your vacation.

In their restaurant, each meal is curated to reach your senses, and allow you to derive full pleasure from your eating experience. They offer buffet breakfasts with a wide variety of fresh products and freshly prepared dishes. Mealtimes are an opportunity to taste their excellent international dishes or to try the delicious Filipino cuisine.



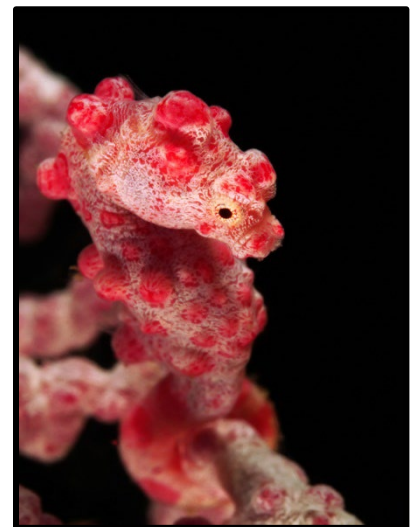
The Spa is a paradise of relaxation with incredible panoramic views. With daily therapeutic massage sessions, everything here is designed to help you disconnect from your daily routine. It has 2 treatment rooms, with a total of 4 massage beds for couples or individual treatments, dressing room, bathroom, and an outdoor relaxation area.

Complete PADI Dive Center, boats, Instructor & Dive Masters as well as Nitrox & Air fills.

Brand new Diving & Snorkeling Equipment. Training pool (10 ft/3 m) depth. Unlimited diving (up to 4 dives a day).

12-liter (80 cu ft) aluminum tanks with INT/DIN connections with 15-liter (100 cu ft) tanks upon request).

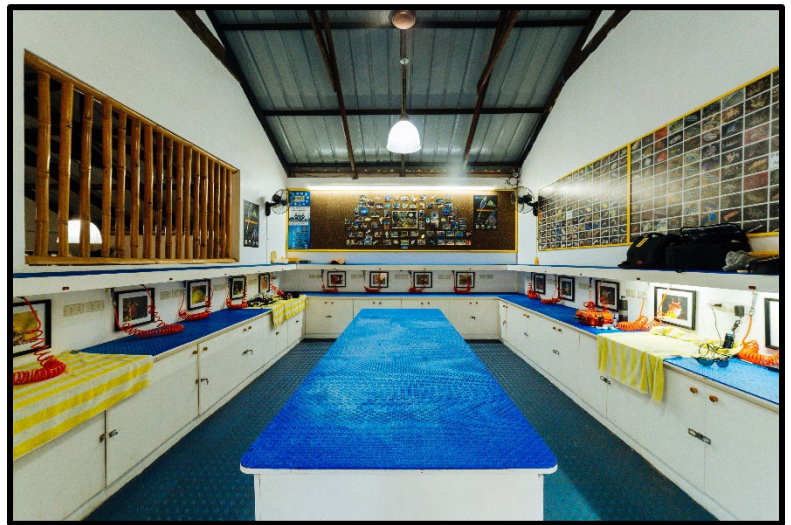
The equipment room has 18 spaces with 36 boxes for great organization of your dive gear plus additional space for other guests.





The boats are traditional Filipino “Bangkas,” one of the most stable boats ever built and the ideal boat to directly dock on the beach under all weather conditions. It has a capacity of up to 10 divers + crew, but most of the time they only assign 6 divers together with their experienced dive masters.

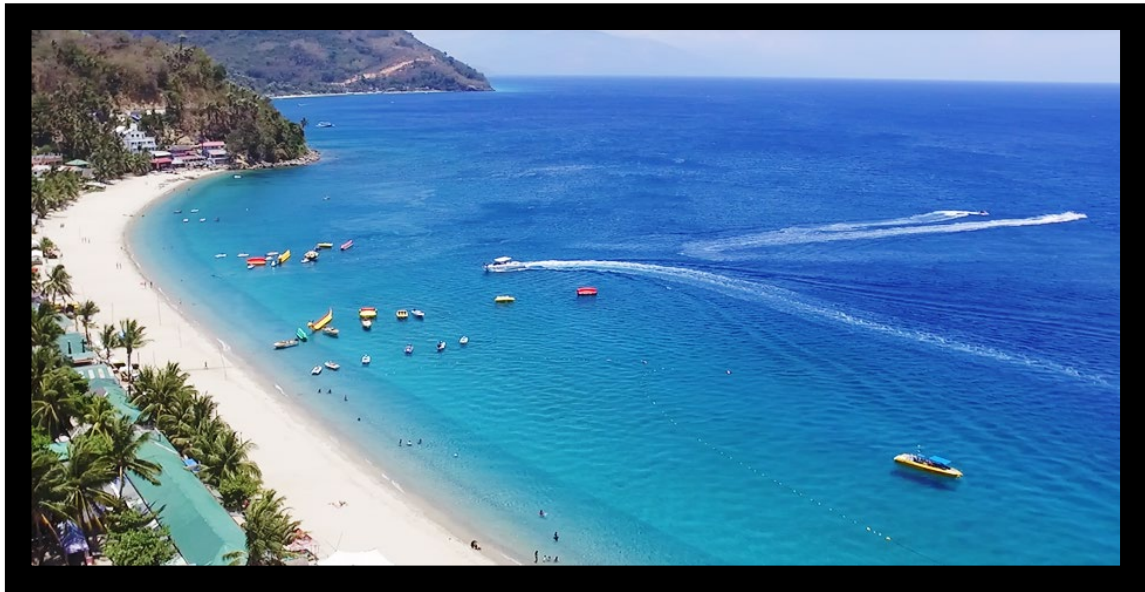
Their state-of-the-art camera room has 18 individual workstations with matted desks/shelves, outlets, lockers, air guns and lights. A matted center table with 8 lockers is provided for additional guests. The 4 rinse tubs are also fully matted to protect your cameras.



Marco Vincent Resort, Philippines (9 nights)

Experience the irresistible rhythm of an island's drumbeat. See the untamed charm of Puerto Galera. The Marco Vincent Resort offers enjoyable, comfortable, and worry-free stay because of its premier quality, service, and entertainment.

This Hotel Resort is approximately 100 meters from the renowned White Beach of Puerto Galera. An exclusive retreat offering the utmost in relaxation, recreation, and fine dining. It is the perfect venue for family vacations, weddings, parties, conferences, seminars, company team building, private gatherings; or simply communing with the exquisite natural surroundings.



Marco Vincent Resort has 38 exclusive Mediterranean style rooms; deluxe, super deluxe, family, super family, queen room, premiere queen, and premiere king room. Each has queen or twin beds, hot and cold showers, air conditioning, satellite or cable TV, refrigerator and WIFI Internet Access. The rooms surround a 75 square meter swimming pool and its adjacent Jacuzzi. In addition, there is a Spa on the premises and a restaurant atop.

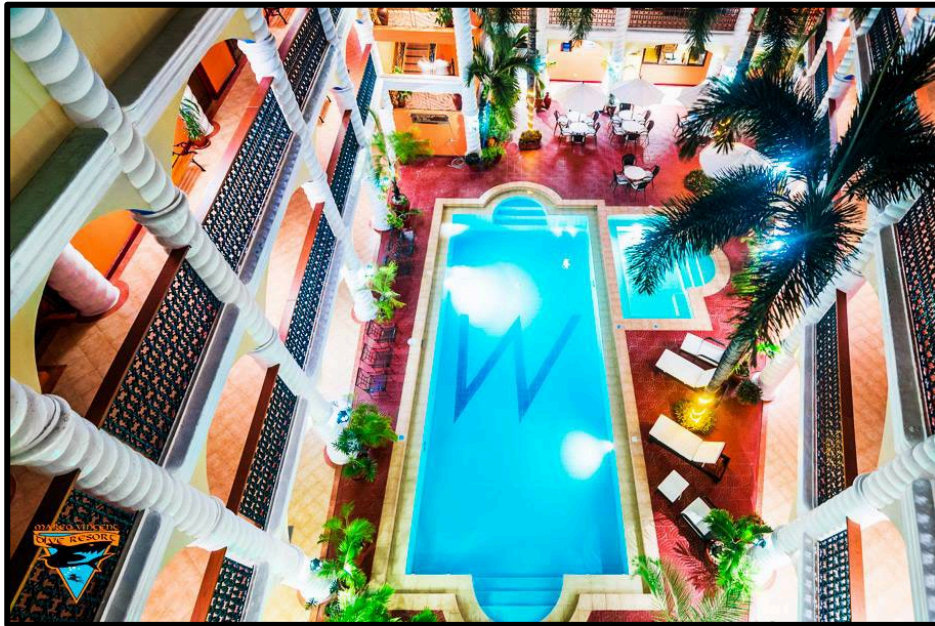
After a wonderful day on their reefs there is nothing better than relaxing in a comfortable room. Their spacious rooms have comfortable beds and personnel a/c units. There is a stocked mini bar and fridge with cable TV.

There is ample storage space for your clothes and a safety box to keep valuable items. You can enjoy a relaxing hot shower and they provide a full selection of toiletries; their front desk can be contacted by the intercom phone in your room.



Their poolside restaurant is the perfect place to start your day! Enjoy a Filipino breakfast of fried garlic rice, eggs however you want them, accompanied by local delicacies of tocino (Filipino ham), Longganisa (native sausages) or daing (marinated fish). They also serve well loved, traditional, American breakfasts of fluffy pancakes, French toast, omelets with hashers of sausages, bacon, or ham. Feeling Asian today? Then it is Congee with sidings of pickled vegetables, century egg, minced meat, and sautéed vegetables. Something light? A basket of fresh baked bread, local mango, guava, or coconut jam with a pot of brewed coffee it is!

Toast the sunset, have dinner under the stars and with your toes in the sand at their beach front Aqua restaurant and Café. Boasting a fully stocked bar and daily specials, this is the perfect place to unwind after a busy day of sightseeing, diving, or beach hopping.



To create a quality diving environment for guests, they have invested in some of the finest facilities that you will find at any dive resort. From diving on stylish and comfortable dive boats to a modern fully equipped camera room, they have many facilities in place to enhance your scuba diving vacation.

As a PADI 5 Star Dive Center, they have full sets of dive equipment and underwater cameras for rent. All dives are guided with a maximum group size of 5 guests per divemaster. 3 dives a day and optional night dives during the week. Maximum depth is 100 feet and safety stops are required.

The pride of their fleet of is the colossal Big Beth. At 85ft long with a crew of six she is the most luxurious day boat in the area. She has everything that you need on a dive boat including showers, camera rinse tanks and charging stations. There is a spacious sundeck to relax on in between dives and there is a full service of food and drinks. Lady Merci at 42ft long is their boat that is used for small groups of divers. They have two speedboats that are used as chase boats for when they have groups of divers.



With over 3,000 marine species Puerto Galera is a mecca for the underwater photographer. MV dive resort has a modern and spacious climate-controlled camera room. They have 12 individual workstations that come complete with towels, spotlight, charging strips and compressed air hoses. If you cannot wait to check your images, then never fear as they have full multimedia service and large TV screen.

DIVING

Participants must bring certification cards and/or logbooks (as well as Nitrox certification cards where applicable). All divers will be asked to sign a waiver on arrival.

Water temperatures are broadly similar throughout the entire Philippines region with averages of 78° F - 82° F. Most guests will find a 3mm wetsuit and possibly just a rash guard suitable for the water temperature.

Divers are expected to follow standard safe diving practices, exhibit good buoyancy control, to respect the underwater environment and not wear gloves. Typical dive time is approximately 50-60 minutes with a maximum depth of 100 feet (30m). To participate in night dives or dives below 60 ft (18m) divers are required to show experience/ certification in night or deep diving.

Safety Stops are required on all dives.

Every diver is also **required** to have and use a dive computer on each dive. Each diver is responsible for his/her own dive profile, bottom times, nitrogen loading and No Decompression Times. In addition, Nitrox divers are responsible for their own PO2 times.

EQUIPMENT RENTALS (subject to currency exchange rate and excludes tax)

		MARCO VINCENT 9 NT	BUCEO ANILAO 5 NT
NITROX		\$ 180 for 8 days	\$ 5.50 per tank
BCD		\$ 20 per day	\$ TBD
REGULATOR		\$ 20 per day	\$ TBD
MASK AND SNORKEL SET		\$ TBD	\$ TBD
WETSUIT		\$ 10 per day	\$ TBD
DIVE COMPUTER		\$ TBD	\$ TBD
FULL EQUIPMENT SET		\$35 per	\$ 20 per day